

# The WiNSpace News



Issue 7: May 2021

Go to the: [WiNSpace Website click here](#)

## Community Centre Planning Application (Planning No 21/P/1037/FUL)

**In issue 6 of the newsletter, we told you that our Architects B2 had submitted the planning application. However North Somerset Planning have yet to validate our documents which means you can't yet view them and make comments. In the meantime we are pursuing funding with the Parish Council (PC) who have voted in favour of asking the parish their views on whether they should provide financial support for this project. They will be launching a parish wide survey with information on it in the PC's Occasional Newsletter. See below for more on this.**

### The Business Plan - Funding the build

The estimated cost of the Project is £2.2M of which we already have identified over 30%.

Two important sources of further funding are:

- A National Lottery Grant for £0.5M which has been applied for and
- Two loans of £0.25M each, via the PC. The PC to fund one through an increase in the Parish precept charge (estimated at 50p per month per household addition), and the other to be repaid by the WCA, both over a term of 30 years.

**The PC will need to know that there is wide-spread Parish support for the project to support us with these loans.**

### Helping to make it happen

Your support is vital to making this project happen.

1. When the Parish Council opens their survey, seeking views on raising the loans to support the project (see the June Occasional newsletter), **please complete the survey and encourage others to do so.**
2. The WiNSpace team are now looking at how we can increase awareness of this survey, as a low response by the parish would send a very negative message. **If you want to help us in this, please join a zoom meeting on the 19<sup>th</sup> May at 7:30pm – reply to this newsletter and we'll send you zoom joining details**
3. When available please do go to the planning portal and give your comments – we need a clear message that the Parish needs update modern facilities.



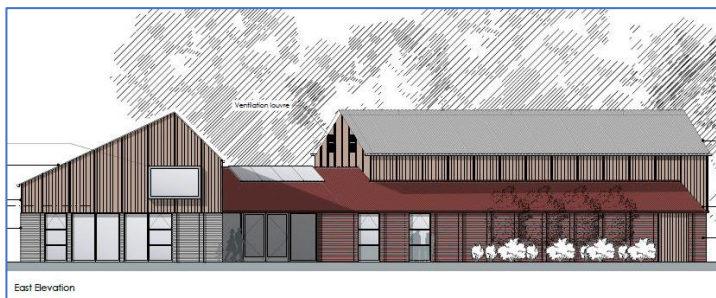
**From this**



**To this**

### What happens when the planning documents are validated

When the documents are validated a Planning Officer will be assigned and the documents will be available to view; after which there is a period of public consultation. This is the time when the public and organisations can consider what has been submitted and make comments. The PC will then also consider the application at their next available planning meeting. Don't forget comments can be made not only to raise concerns but are also needed to show there is widespread support for the development.



**Help Needed: Please let us know, by sending us an email, if you want to join the Zoom meeting on the 19 May, we'll then send joining instructions. Make sure you complete the Parish Council survey in June. We will put all the planning documents on our website later this month**

Issued by the WiNSpace committee and WCA Trustees  
To get in contact just send an email to [Info.winspace@gmail.com](mailto:Info.winspace@gmail.com)

WiNScombe  
newSPACE  
a modern venue for the village