

## WiNSpace gets Planning Approval

*So after 11 months of waiting and the submission of 35 documents we have just learnt that:*

***Our plans for the development of the Winscombe Community Centre have been approved by the North Somerset Local Planning Authority.***

*If you wish to read in full what the Planners had to say and the conditions which have been attached to the planning have a look at the NS Planning Portal at [North Somerset Planning 21/P/1037/FUL](#).*

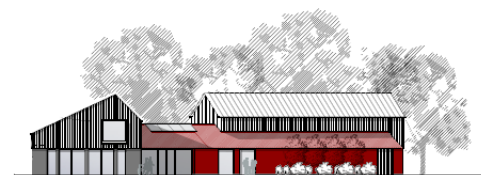
*These are just some of the comments made in the planning report:*

- 'the proposed development has been designed to be sympathetic to its surroundings as well as providing the community with an improved community facility'
- 'the location of the proposed development is well related to the community it is intended to serve and is genuinely accessible by sustainable modes of transport'
- 'the results of a protected species survey conclude that there is negligible potential for protected species to be affected by the development'



*The planners have placed 24 conditions to the planning application, these include:*

- We start building within 3 years
- We build in accordance with the plans we submitted including drainage schemes, tree protection & ecology assessments.
- We gain final agreement from the Local Planning Authority for external wall and roof materials, building heights, external light scheme and drainage management & maintenance, before starting the build.
- We have approval for the Construction Environmental & Ecological Management Plan, Construction Method Plan & Noise Management Plan.
- We don't start using the new building until we have provisioned the parking, electric charging points for vehicles, racks for 28 bikes, and solar panels & air source heat pumps, installed and working.



***In Summary, this is a massive step forward with an approved design to take forward to funders and potential users. With nearly £1.3m of funding already identified, we have just 40% left to go. Individually, we can also dare to start dreaming of how we will use the Centre, and the activities and clubs we'd like to see.***

### *Our Next Steps*

In the next few weeks we'll be communicating with you again with news of 'what happens next'. This is likely to be in the form of a public meeting with information on what you can do to help.

***Our thanks go to our Architects B2 for all their hard work in getting us through planning.***



WiNscombe  
newSPACE

*a modern venue for the village*

