

User Information Evening



Welcome

go
winspace
24

WINSCOMBE COMMUNITY ASSOCIATION



go
winspace
24

WINSCOMBE COMMUNITY ASSOCIATION



discover | donate | follow

www.winspace.org.uk

WinSpace  benjamin+beauchamp
View from existing car park architectural design consultants
the borough studios, the borough, walsley, southwark S25 3JZ
© 2013 Benjamin+Beauchamp
www.benjaminbeauchamp.com

Agenda

- Project update
- Plans
- User group questions
- Project transition phase



Project Update



1. Funding

85%

2. Design and Quotes

80%

3. Legals

40%

4. Overall Readiness

75%

Delivery Plan

A phased approach



Phase 1

- Removal of two temporary buildings – Art shed and youth club
- Build the south wing of the new WiNSpace building – including large upstairs room
- Re-site the Parish offices
- Sell the Headmaster's cottage
- Current cost estimate: £2m

Phase 2

- Refurbish old school site



WinSpace  View from existing car park

Future Proofing

- North wing auditorium

Longer term -
unfunded

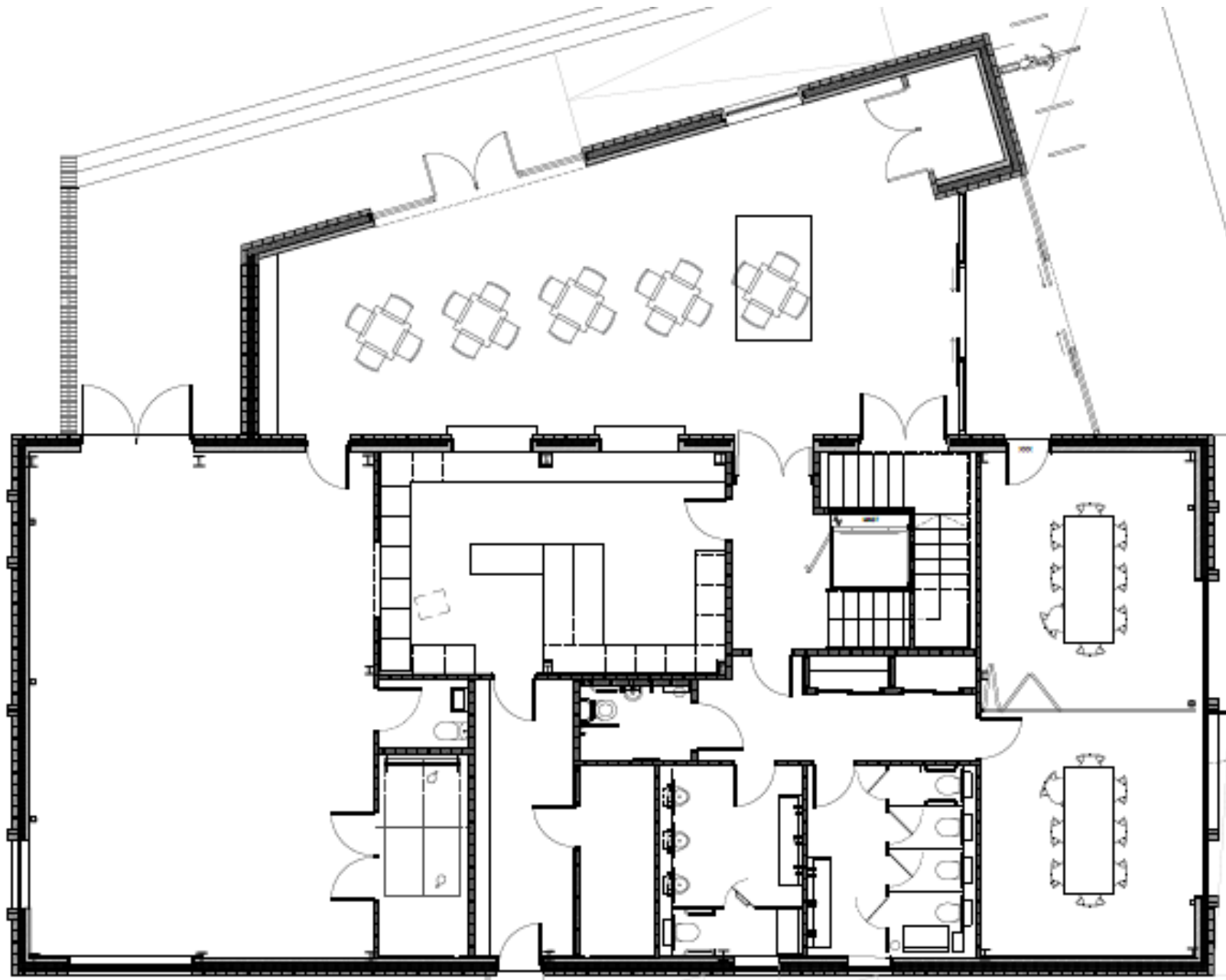
Site Plan



Site Details

- New Building (P1)
- Car Parking (60)
- Old School (P2)
- Landscaping
- Bike Racks & EV
- Annexe to be removed after Phase 2

Ground Floor Layout



Ground Floor Details

- Activity Hall
- Meeting Room
- Foyer
- Kitchen
- Lift
- Stairs
- WC

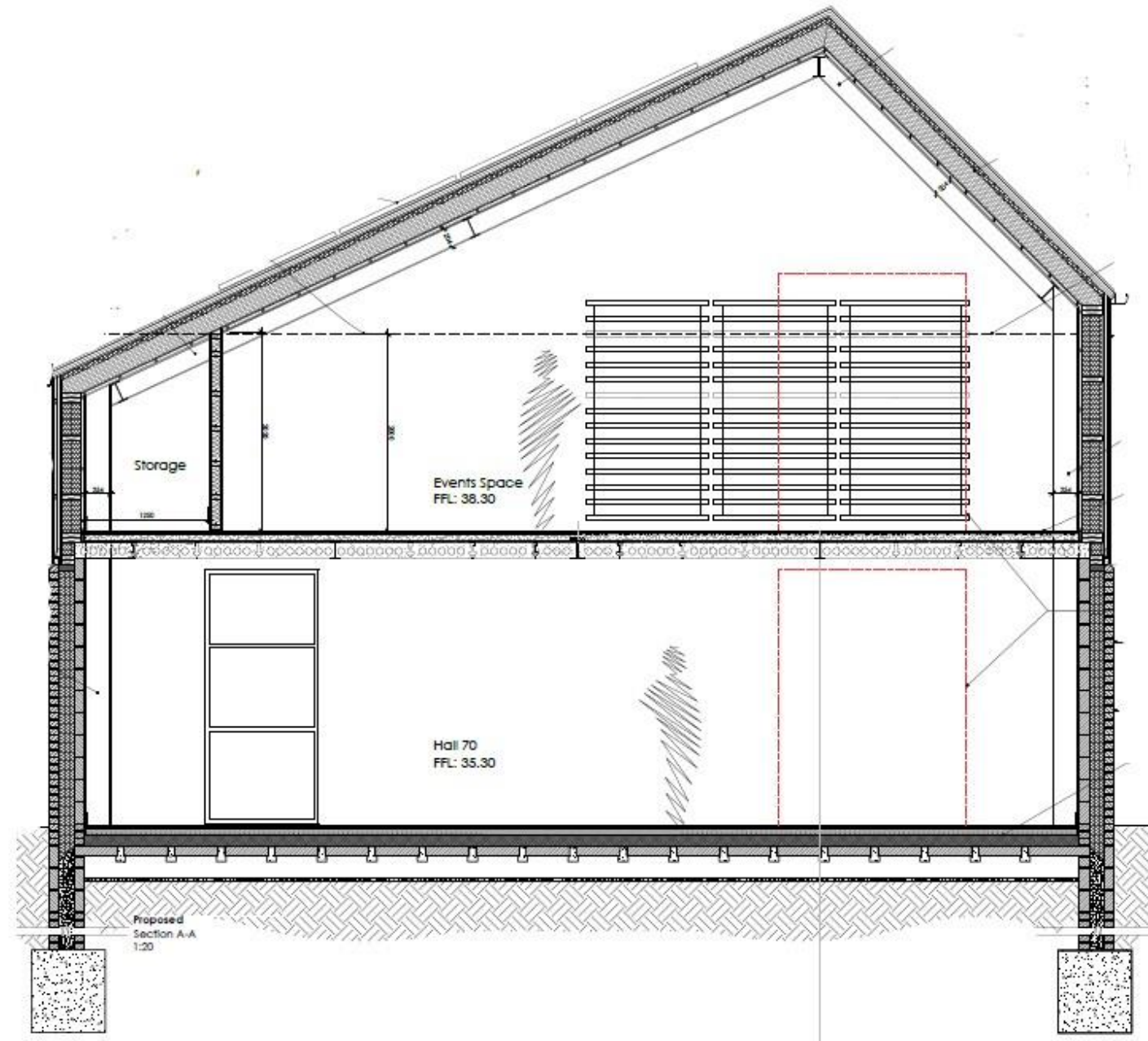
First Floor Layout



First Floor Details

- Event Space
- Meeting Room
- Kitchenette
- Parish Office
- Lift
- Stairs
- WC

Section through Main Building



Section Details

- 1st Floor vaulted
- Exposed beams
- Storage under Eaves

Views of New Building



WinSpace  benjamin+beauchamp
View from existing car park architecture design conservation
the borough studios, the borough, weston, somerset BS26 4JZ
T 01884 713212 F 01884 713214
info@benjamin+beauchamp.com www.benjamin+beauchamp.com



WinSpace  benjamin+beauchamp
View from the east architecture design conservation
the borough studios, the borough, weston, somerset BS26 4JZ
T 01884 713212 F 01884 713214
info@benjamin+beauchamp.com www.benjamin+beauchamp.com

Front & Rear Elevations

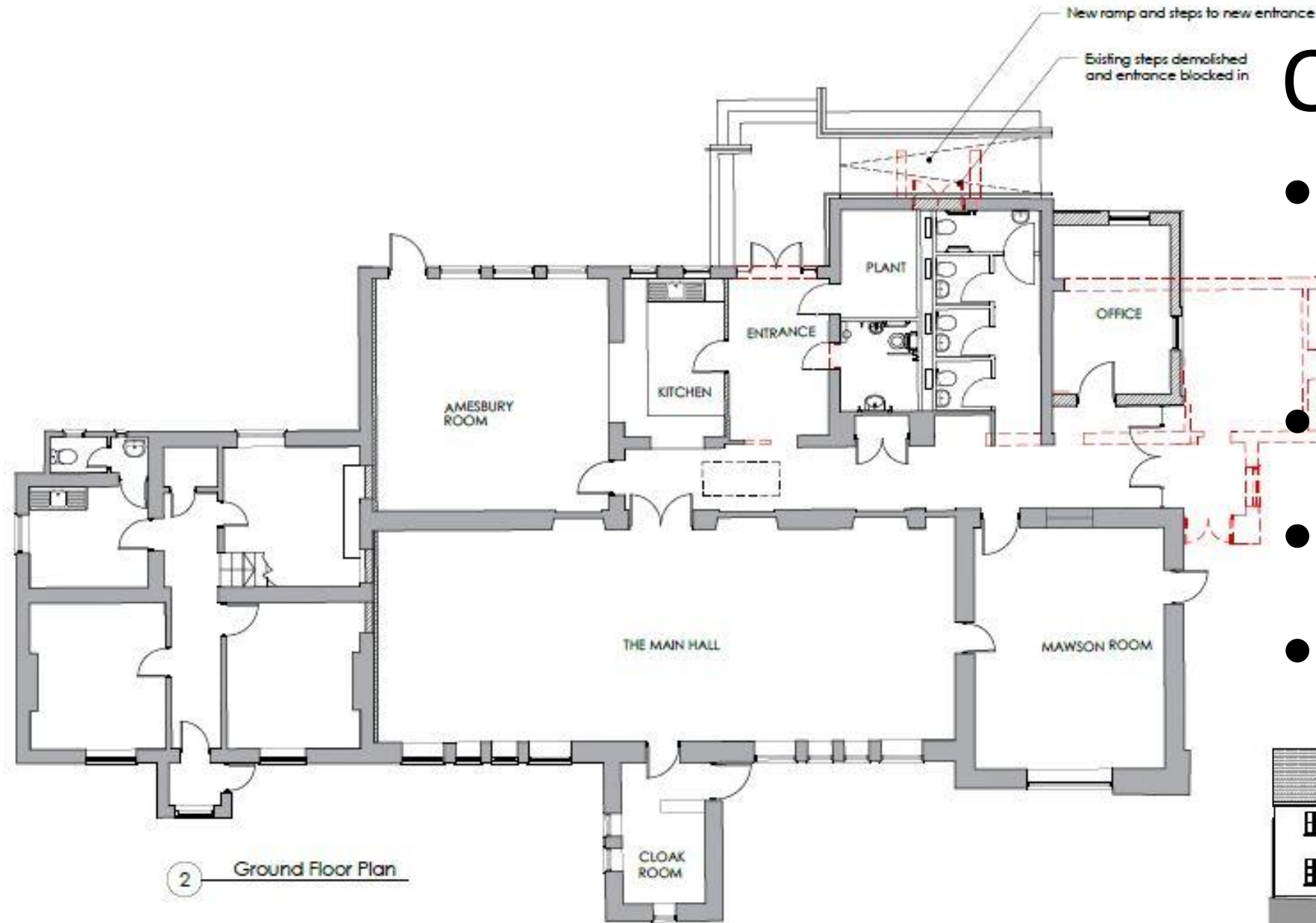


Proposed
East Facing Elevation
1:50



Proposed
West Facing Elevation
1:50

Phase 2 – Youth Centre



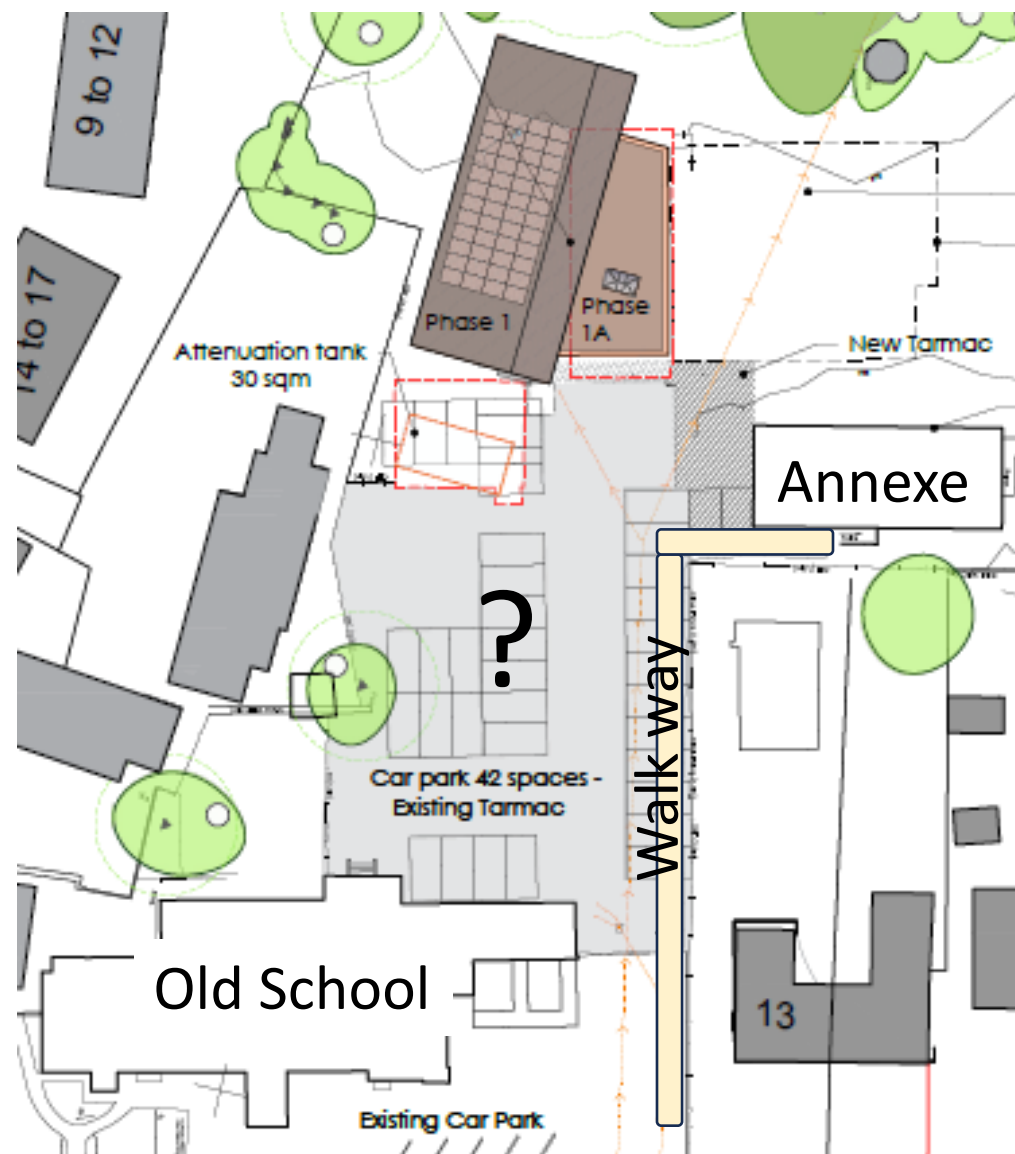
Old School Details

- Ladies toilet and boiler room removed
- New entrance at rear
- Eco improvements
- 3 rooms retained



Transition Plan

During Construction of Phase 1 (52 weeks)



The plans below are provisional and will depend on agreements between WCA and contractors to ensure Health and Safety

- Old school building will remain fully open
- Annexe will remain full open by only accessible by foot from Sandford Road and Fire Station
- Amount of Car Parking available will subject to contractor's requirements
- A partition is planned to be built in the Annexe to allow 2 groups to meet simultaneously
- Additional storage cupboards are planned be built in the main hall along wall adjacent to Headmaster's house
- Access to field will be via the walkway
- A container will be hired to replace garage storage
- No changes to Old School will occur until phase 1 completion

WiNSpace Timeline

